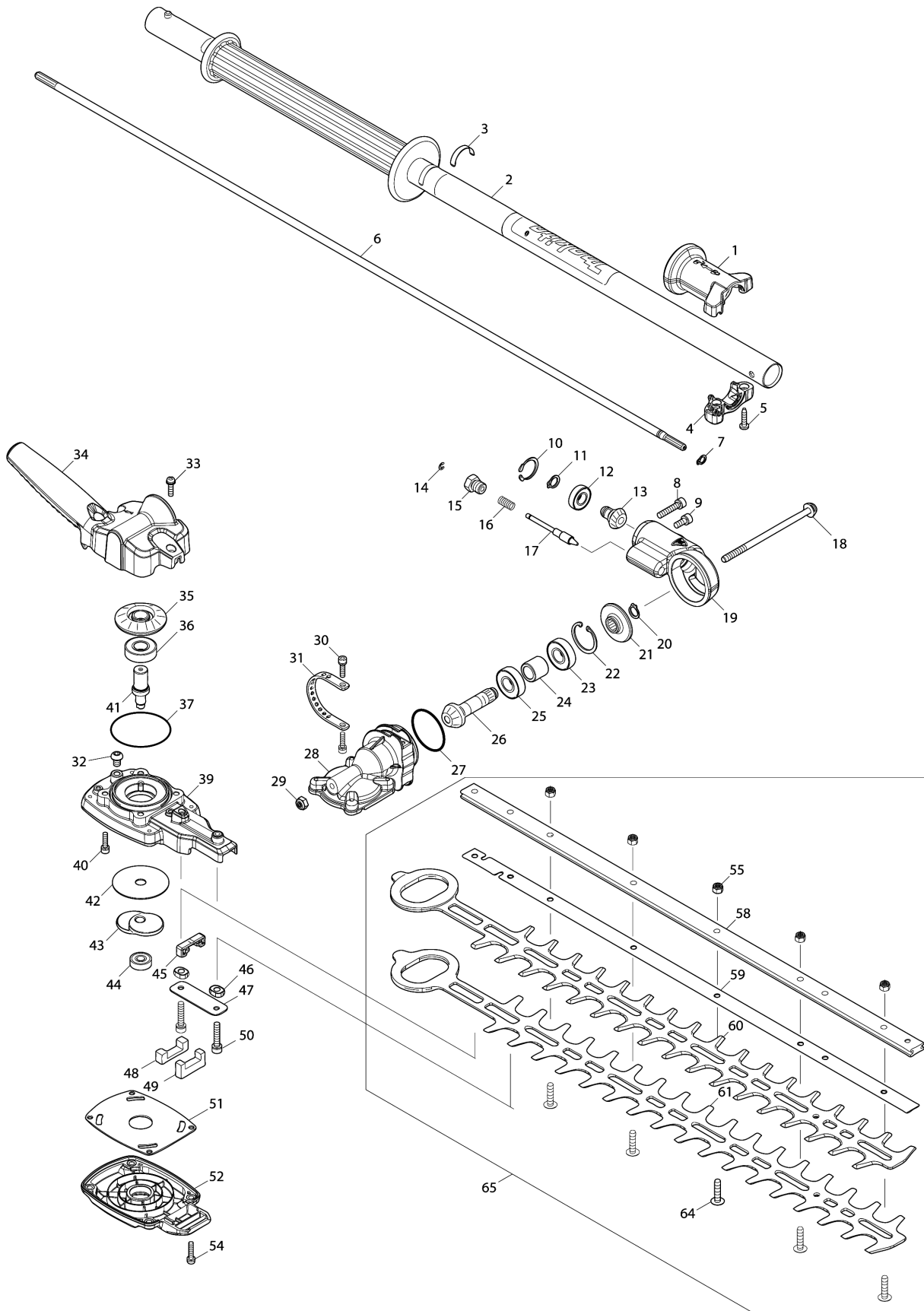


Model No.EN402MP HEDGE TRIMMER ATTACHMENT



Model No.EN402MP HEDGE TRIMMER ATTACHMENT

Position	Artikel-Nr.	Beschreibung	I/C	Stk.	New/Old	Opt. 1	Opt. 2	Hinweis
001	413P43-3	SLIDE LEVER U		1				
002	141P96-9	GRIP PIPE COMPLETE A		1				
C10	163525-6	LEAF SPRING COMPLETE		1				
C20	819312-8	MAKITA LOGO LABEL		1				
C30	808723-2	CAUTION LABEL		1				
C40	8068H6-8	CAUTION LABEL		1				
003	814A82-0	DATE CODE LABEL		1				
004	413P44-1	SLIDE LEVER L		1				
005	266326-2	TAPPING SCREW 4X18		2				
006	327723-8	SHAFT A		1				
007	961003-8	RETAINING RING S-7		1				
008	922241-7	HEX. SOCKET HEAD BOLT M5X25		1				
009	922211-6	H.S.H.BOLT M5X12 WITH W		1				
010	962112-6	RETAINING RING R-22		1				
011	961006-2	RETAINING RING S-10		1				
012	210167-8	BALL BEARING 6900LLB		1				
013	227A69-7	SPIRAL BEVEL GEAR 11		1				
014	961017-7	STOP RING E-3		1				
015	327B80-6	STOPPER HOLDER		1				
016	233201-7	COMPRESSION SPRING 6		1				
017	327B81-4	ROD 8		1				
018	265D20-7	H.S BUTTON HEAD BOLT M6X110		1				
019	312E11-6	JOINT		1				
020	961006-2	RETAINING RING S-10		1				
021	227A70-2	SPIRAL BEVEL GEAR 25		1				
022	962106-1	RETAINING RING R-28		1				
023	210163-6	BALL BEARING 6001DDW		1				
024	327B79-1	SLEEVE 12		1				
025	210163-6	BALL BEARING 6001DDW		1				
026	227A71-0	SPIRAL BEVEL GEAR 15		1				
027	213506-1	O RING 36		1				
028	312E12-4	GEAR HOUSING		1				
029	252190-7	HEX.LOCK NUT M6-10		1				
030	922126-7	HEX. SOCKET HEAD BOLT M4X16		2				
031	347B10-1	ANGULAR PLATE		1				
032	265338-2	H.S.BOTTON HEAD BOLT M6X8		1				
033	911128-8	P.H.SCREW M4X16 WITH WR		2				
034	413P46-7	HANDLE		1				
035	227A72-8	SPIRAL BEVEL GEAR 31		1				
036	210163-6	BALL BEARING 6001DDW		1				

Please order the parts with part number.

Print Date 12/5/2023

Model No.EN402MP HEDGE TRIMMER ATTACHMENT

Position	Artikel-Nr.	Beschreibung	I/C	Stk.	New/Old	Opt. 1	Opt. 2	Hinweis
037	213641-5	O RING 51		1				
039	136987-1	CRANK HOUSING ASS'Y		1				
C10	263002-9	RUBBER PIN 4		1				
040	922126-7	HEX. SOCKET HEAD BOLT M4X16		4				
041	327B78-3	SPINDLE		1				
042	347B34-7	FRICITION PLATE U		1				
043	313471-5	CRANK		1				
044	210062-2	BALL BEARING 607ZZ		1				
045	413P97-0	DUST GUARD		1				
046	313470-7	SPACER		2				
047	347B33-9	LOWER PLATE		1				
048	422A85-6	SPONGE SEAL		1				
049	422A16-5	DUST GUARD		1				
050	922241-7	HEX. SOCKET HEAD BOLT M5X25		2				
051	347B35-5	FRICITION PLATE L		1				
052	413P45-9	UNDER COVER		1				
054	265D11-8	H.S.H.BOLT M4X18 WITH W		4				
055	264013-7	HEX. LOCK NUT M5-8		5				
058	327B33-5	GUIDE BAR 500		1				
059	347B09-6	PLATE 500		1				
060	725318-5	SHEAR BLADE 500		1				
061	725318-5	SHEAR BLADE 500		1				
064	265D00-3	+TRUSS HEAD SCREW M5X22		5				
065	1912G3-7	SHEAR BLADE 500 SET		1				
C10	199450-5	GREASE VESSEL SET		1				
D10		INC. 55,58-61,64						
A01	413R17-6	BLADE COVER 500		1				
A02	422A15-7	CAP 24		1				
A03	424434-7	CAP 24		2				
A04	783202-0	HEX. WRENCH 4		1				
F01	1912T8-8	EN402MP HEDGE TRIM. ATTA. SET		1				

Please order the parts with part number.

Print Date 12/5/2023