



Cordless Heated Jacket Series

DCJ205 / DCJ206 / DCV202 **LXT**

CJ105D / CJ106D / CV102D **CXT**



HEATED JACKET and VEST

DCJ205 / CJ105D

DCJ206 / CJ106D

DCV202 / CV102D



HEATED JACKET and VEST



Max run time

7.0 h

Mode : High

Battery : BL1850B



Jacket type
DCJ205 / CJ105D



High-visibility type
DCJ206 / CJ106D



Features



Battery pocket

■ DCJ205 / CJ105D
■ DCJ206 / CJ106D
■ DCV202 / CV102D



Two-way zip fastener

■ DCJ205 / CJ105D
■ DCJ206 / CJ106D
■ DCV202 / CV102D



Pen pocket

■ DCJ205 / CJ105D

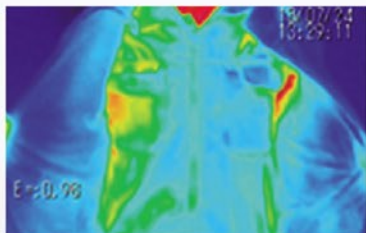


Detachable hood

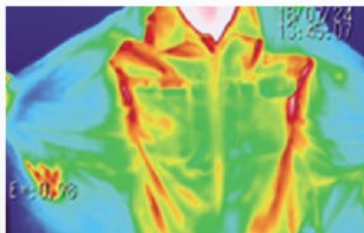
■ DCJ206 / CJ106D

Heating effects

When wearing in a minus 5 degree C environment
(in High mode)



when switch is off



about 15 minutes after
switch-on

3 Heat settings

Continuous runtime on a single full
battery charge



Low



29h

Medium



11h

High



7h

with BL1850 (18V-5.0Ah Battery)

5 Heat zones

■ DCJ205 / CJ105D ■ DCJ206 / CJ106D

Left chest, right chest and back have each heating element.



4 Heat zones

■ DCV202 / CV102D

Left chest, right chest and back, neck have each heating element.



Wind and Water Resistance

prevents penetration of water such as
light rain.



Fleece lining

warms a body
even when
switch is off



Vest type

■ DCV202 / CV102D



Washable and dryable

Detach the battery holder from the jacket or
vest before washing.



Name tag holder
■ DCJ206 / CJ106D



Retroreflective material
■ DCJ206 / CJ106D

Accessories

Battery holder Powered by Makita Li-ion Battery



As a charger for smart phones



LXT

18V LITHIUM-ION

14.4V LITHIUM-ION

Part No. YL00000004

CXT

12Vmax LITHIUM-ION

Part No. YL00000003

Jacket Size

Shoulder

Sleeve

Chest

Length

Waist

Shoulder

Chest

Waist

	size (in cm)	S	M	L	XL	2XL	3XL
DCJ205 / CJ105D	Length	68	69	71	75	78	82
	Shoulder	50.5	52.5	54.5	55.5	56.5	57.5
	Sleeve	63	64.5	66	67	68	69
	Chest	108	118	128	138	146	156
	Waist	102	112	122	132	140	150
DCV202 / CV102D	Length	72	73	74	75	76	77
	Shoulder	47.5	49.5	51.5	53.5	55.5	57.5
	Chest	114	120	126	132	138	144
	Waist	116	122	128	134	140	146

Longer continuous run time on a single full battery charge

Model No.	Battery holder	Li-ion Battery		Continuous run time Low / Medium / High	Net weight Jacket size L	Pockets
■ DCJ205	<div><div>LXT</div><div>18V LITHIUM-ION</div><div></div></div>	18V	6.0Ah BL1860B	35 / 14 / 8.5 h with BL1860B	1.1kg (2.5 lbs.)	5
■ DCJ206			5.0Ah BL1850B		1.2kg (2.5 lbs.)	
■ DCV202			4.0Ah BL1840B	35 / 20 / 10 h with BL1860B	0.5kg (1.1 lbs.)	4
			3.0Ah BL1830B			
			2.0Ah BL1820B			
			1.5Ah BL1815N			
■ CJ105D	<div><div>CXT</div><div>12Vmax LITHIUM-ION</div><div></div></div>	12Vmax	4.0Ah BL1041B	14 / 5.5 / 3.5 h with BL1041B	1.1kg (2.5 lbs.)	5
■ CJ106D			2.0Ah BL1021B		1.2kg (2.5 lbs.)	
■ CV102D			1.5Ah BL1016	14 / 7.5 / 4 h with BL1041B	0.5kg (1.1 lbs.)	4

The weight may differ depending on the attachment(s), including the battery cartridge. The lightest and heaviest combination, according to EPTA-Procedure 01/2014, are shown in the table.
Items of standard equipment and specifications may vary by country or area.

Makita Corporation

3-11-8 Sumiyoshi-cho, Anjo, Aichi, 446-8502 Japan

PRINTED IN JAPAN 201809