

**Makita**

# 18Vx2 Brushless Chainsaw 350mm / 400mm

DUC355

DUC405



**18Vx2 18V + 18V 36V**  
**BRUSHLESS**



**Makita**

18Vx2 18V+18V 36V

**BRUSHLESS**

**WHEN POWER MEANS BUSINESS**

When you choose Makita Outdoor Power Equipment, you choose to be part of something bigger. Our complete line up of cordless outdoor solutions will revolutionise the way you work - empowering you with over a century of knowledge and expertise in crafting the world's most reliable tools. With the support of the world's largest 18V cordless system, you can be sure our Power Garden range will get the job done and more - no petrol or cord needed.





# Product Objectives

- Designed to suit the needs of arborist, landscapers, campers and home user
- Develop a brushless 36V (18Vx2) chainsaw with high power and high chain speed utilising a 350mm or 400mm bar and chain with captive bar nuts for secure bar retention



# Product Overview

18Vx2 Brushless Motor

Mains power switch

Variable speed trigger switch

Front hand guard

Metal spike bar

Captive bar nuts



Adjustable chain lubrication

# Product Specification Sheet



	DUC355	DUC405
Oil tank capacity	200mL	
Chain speed	0 - 20m/s	
Guide bar length	350mm (14")	400mm (16")
Standard chain	3/8" / 0.043	
Noise	69dB	
Overall length	443mm	
Skin weight	4.3kg	4.5kg
Weight (with battery)	5.5kg	5.7kg
Voltage	36V (18V x 2)	

- **18Vx2 Brushless Motor** – powered by two 18V Li-ion batteries the chainsaw is supplied with 36V of power to the brushless drive system
- **Mains power switch** – with auto power off function, automatically turns off the chainsaw after no activity for 1 minute
- **Variable speed trigger switch** – enables the user to have the same control of the trigger as they would the accelerator on a petrol product
- **XPT** – for use in outdoor applications protection from dust and dripping water is enhanced protecting the circuitry
- **Front hand guard** – activates the kickback brake, pushing forward of the front hand guard stops the blade instantly
- **Metal spike bumper** – firmly grips the workpiece to provide more control, making cutting easier
- **Captive bar nuts** – provides solid bar retention with bar nuts that remain captive in the cover to avoid being lost
- **Automatic chain lubrication** – the amount of chain oil can be regulated allowing the user to make adjustments based on whether they are cutting hard or soft wood

# Advantages

## Performance



Outer rotor brushless motor delivering high levels of improved performance

## Innovation



36V of power and runtime without leaving the 18V platform

## Convenience



Captive bar nuts  
For solid bar retention

## Efficiency



Variable speed trigger switch  
Same as a petrol powered chainsaw

# Advantages

## Makita's high performance Outer rotor brushless motor

Thanks to the new outer rotor brushless motor the DUC353 is able to produce more power and more efficiency than ever before.

The new design means the stator rotates and the armature remains stationary, making the motor a highly efficient direct drive system

**BL**  
**MOTOR**

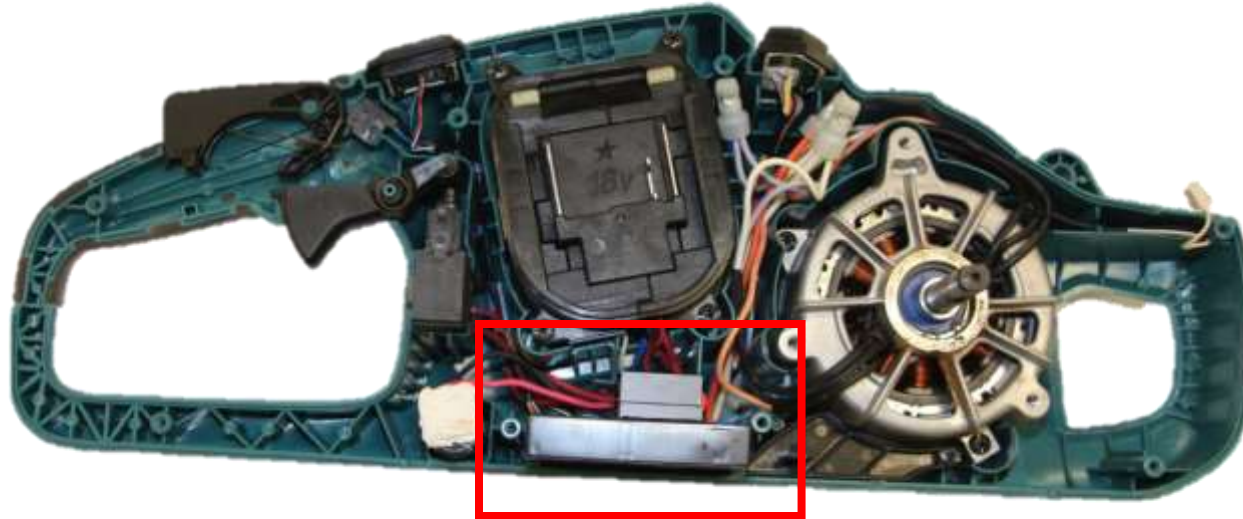


# Advantages

## XPT – eXtreme Protection Technology

This technology has been designed for use in outdoor applications or harsh environments. XPT provides increased protection for the circuitry from dust and dripping water

This is achieved by carefully sealing and protecting internal components so that they stay free from exposure of dust and moisture



Sealed internal circuitry components

**XPT**  
EXTREME PROTECTION TECHNOLOGY




# Overview Video



**DUC355**

**DUC405**


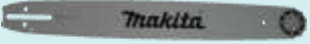

# Our Range

	DUC254	DUC302	DUC353	DUC355	DUC400	DUC405
						
Motor	Brushless	Brushed	Brushless	Brushless	Brushless	Brushless
Bar retention	Captive nut	Tool-less	Tool-less	Captive nut	Tool-less	Captive nut
Oil tank capacity	140mL	85mL	200mL	200mL	200mL	200mL
Chain speed	0 - 24m/s	8.3m/s	0 - 20m/s	0 - 20m/s	0 - 20m/s	0 - 20m/s
Guide bar length	250mm (10")	300mm (12")	350mm (14")	350mm (14")	400mm (16")	400mm (16")
Standard chain	3/8" / 0.043	3/8" / 0.043	3/8" / 0.043	3/8" / 0.043	3/8" / 0.043	3/8" / 0.043
Noise	69dB	74dB	69dB	69dB	69dB	69dB
Overall length (Powerhead)	256mm	316mm	443mm	443mm	443mm	443mm
Skin weight	2.7kg	3.5kg	4.0kg	4.3kg	4.2kg	4.5kg
Weight (with battery)	3.3kg	4.7kg	5.2kg	5.5kg	5.4kg	5.7kg
Voltage	18V	36V (18V x 2)	36V (18V x 2)	36V (18V x 2)	36V (18V x 2)	36V (18V x 2)


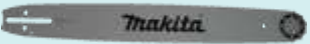



# Accessories

## Standard Accessories – DUC355

	196741-5	<b>350mm (14") Saw Chain 3/8" LP – 0.043# Semi Chisel 52 C/Link</b>
	165246-6	<b>350mm (14") Sprocket Nose Guide Bar</b>
	419560-5	<b>Guide bar cover</b>

## Standard Accessories – DUC405

	531.291.656	<b>400mm (16") Saw Chain 3/8" LP – 0.043# Semi Chisel 56 C/Link</b>
	165247-4	<b>400mm (16") Sprocket Nose Guide Bar</b>
	419560-5	<b>Guide bar cover</b>

## Optional Accessories

	953.030.010 953.003.090 953.100.040 953.030.040 953.007.000	<b>Sharpening and round files</b> 4mm (5/32") Sharpening File & Guide ( 5/32") Round file only 4mm (5/32") File Guide Bar Clamped Sharpening Jig Stump Vice for Sharpening
	945.900.001 988.070.819 988.070.824 988.070.081 988.070.101	<b>Timber Felling Wedges</b> 140mm Plastic Wedge 200mm Plastic Wedge 250mm Plastic Wedge 215mm Aluminium Wedge 260mm Aluminium Wedge
	C-02001 C-02004	<b>Bar &amp; Chain Oil</b> 1L (QTY: 12 in carton) 4L (QTY: 4 in carton)
	P-76934 P-76940 P-76956 P-76962 P-76978 P-76984	<b>Chain Saw Chaps</b> Small – Buckle Up Medium – Buckle Up Large – Buckle Up Small – Zip Up Medium – Zip Up Large – Zip Up
	SAF600	<b>Safety Helmet</b> Pro Safety Helmet 24dB Ear Muffs & Visor
	66-753	<b>Chain Saw Carry Bag</b> ( with plastic base insert )