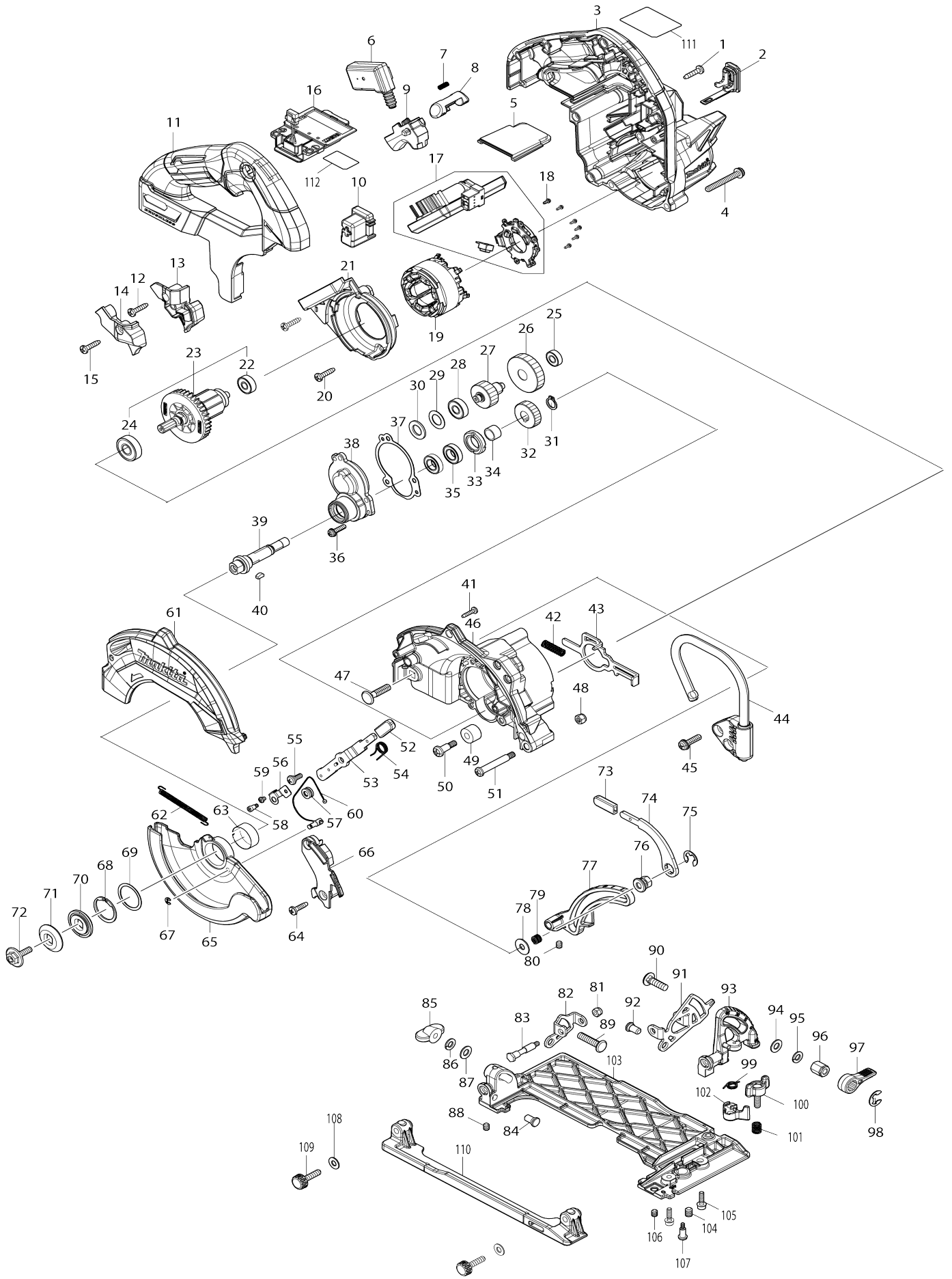


Model No.HS014G Cordless Circular Saw



Model No.HS014G Cordless Circular Saw

Item No.	Parts No.	Description	Interchangeability	Q'ty	New/Old	Note1	Note2
001	266326-2	Binding head tapping screw 4X18		6			
002	140F99-0	Cap complete		1			
C10	213A05-9	O-ring 16		1			
003	1832F3-4	MOTOR HOUSING SET		1	*		
C10	263005-3	Rubber pin 6		2	*		
003		INC. 11			*		
003-1	1832W2-5	MOTOR HOUSING SET	<	1			
C10	263005-3	Rubber pin 6		2			
003-1		INC. 11					
004	911263-2	Pan head screw M5X40 WR		3			
005	413J82-7	Cover		1			
006	650039-9	Switch C3XB-1LPSPM		1			
007	231433-0	Compression spring 4		1			
008	459264-7	Lock off button		1			
009	413975-8	Switch lever		1			
010	459256-6	Holder		1			
011	1832F3-4	MOTOR HOUSING SET		1	*		
C10	263005-3	Rubber pin 6		2	*		
011		INC. 3			*		
011-1	1832W2-5	MOTOR HOUSING SET	<	1			
C10	263005-3	Rubber pin 6		2			
011-1		INC. 3					
012	266326-2	Binding head tapping screw 4X18		1			
013	4135H2-7	LIGHT CASE		1			
014	4135H3-5	LIGHT COVER		1			
015	266326-2	Binding head tapping screw 4X18		1			
016	632P65-6	Terminal unit		1			
017	620T80-6	CONTROLLER		1			
018	652119-7	Pan head screw M2X6		6			
019	629C17-8	Stator		1			
020	266326-2	Binding head tapping screw 4X18		2			
021	412740-2	Baffle plate		1			
022	211012-0	Ball bearing 606ZZ		1			
023	519640-8	Rotor assembly		1			
023		INC. 22,24					
024	210051-7	Ball bearing 609LLB		1			
025	210033-9	Ball bearing 696ZZ		1			
026	226883-2	Helical gear 45		1			
027	226881-6	Helical gear 21		1			
028	210062-2	Ball bearing 607ZZ		1			
029	253376-6	Flat washer 11		1			
030	262180-2	Rubber ring 11		1			
031	961006-2	Retaining ring (EXT) S-10		1			
032	226882-4	Helical gear 22		1			
033	285847-5	Bearing retainer 14-23		1			

034	257493-4	Sleeve 10		1		
035	211485-7	Ball bearing 6800LLU		2		
036	911128-8	Pan head screw M4X16 WR		3		
037	459253-2	Gasket		1		
038	137488-2	BEARING BOX ASS'Y		1		
C10	263002-9	Rubber pin 4		1		
039	327G69-4	SPINDLE		1		
040	254031-3	Woodruff key 3		1		
041	266404-8	Binding head tapping screw 3X1 4		3		
042	233117-6	Compression spring 6		1		
043	347643-0	Shaft lock		1		
044	122L07-9	HOOK ASSEMBLY		1		
045	911233-1	Pan head screw M5X20 WR		2		
046	1413H8-0	GEAR HOUSING COMPLETE		1		
C10	213953-6	O-ring 24		1		
047	266931-5	Flat head square neck bolt M6X2 5		1		
048	252103-8	Hex. lock nut M5-8		1		
049	262511-5	Rubber sleeve 6		1		
050	265115-2	Pan head shoulder screw M5X19		1		
051	265056-2	Pan head shoulder screw M5		1		
052	286036-5	Cap		1		
053	347E94-7	OPEN LEVER		1		
054	232854-9	Torsion spring 10		1		
055	265028-7	Pan head shoulder screw M4X11		1		
056	347E95-5	ROLLER PLATE		1		
057	4135H0-1	ROLLER		1		
058	251484-7	Flat head shoulder screw M3X4		1		
059	265040-7	Pan head screw M3X4		1		
060	162E52-0	Wire rope		1		
061	4135G8-8	BLADE COVER		1		
062	232994-3	Tension spring 3		1		
063	347F01-6	THICKNESS LING 23		1		
064	266034-5	Binding head tapping screw 4X1 6		2		
065	4135G9-6	SAFETY COVER		1		
066	4135H1-9	BLOWER COVER		1		
067	961017-7	Stop ring (EXT) E-3		1		
068	961122-0	Retaining ring (EXT) round S-22		1		
069	267471-6	Flat washer 23		1		
070	224417-5	Inner flange 28		1		
071	224421-4	Outer flange 28		1		
072	266458-5	Hex. socket hex. head flange bol t M6X18		1		
073	286036-5	Cap		1		
074	347087-4	Lever plate		1		
075	257982-9	Bow stop ring (EXT) E-8		1		
076	252265-2	Hex. nut M6		1		
077	312K08-1	DEPTH GUIDE		1		
078	253047-5	Flat washer 6		1		
079	232556-7	Compression spring 6		1		

080	266264-8	Hex. socket set screw (flat point) M5X6	1		
081	252126-6	Hex. lock nut M4-7	1		
082	347511-7	Rear angular guide	1		
083	266932-3	Hex. head bolt M4	1		
084	256336-7	Shoulder pin 6-7	1		
085	252631-3	Thumb nut M6	1		
086	253473-8	Wave spring washer 6	1		
087	941151-9	Flat washer 6	1		
088	266264-8	Hex. socket set screw (flat point) M5X6	1		
089	266309-2	Flat head square neck bolt M6X2 6	1		
090	251919-8	Flat head square neck bolt M6X2 0	1		
091	347510-9	Angular guide	1		
092	256336-7	Shoulder pin 6-7	1		
093	312K07-3	ANGULAR PLATE	1		
094	941151-9	Flat washer 6	1		
095	253473-8	Wave spring washer 6	1		
096	252133-9	Hex. nut M6	1		
097	272251-7	Lever 30	1		
098	961014-3	Stop ring (EXT) E-8	1		
099	231661-7	Torsion spring 9	1		
100	265761-1	Thumb screw M5X16	1		
101	231456-8	Compression spring 7	1		
102	317574-7	Stopper	1		
103	312K04-9	BASE	1		
104	266225-8	Hex. socket set screw (flat point) M6X8	1		
105	251501-3	Hex. socket head bolt M4X14	2		
106	266264-8	Hex. socket set screw (flat point) M5X6	1		
107	265A32-2	Pan head shoulder screw M3	1		
108	941101-4	Flat washer 5	2		
109	252272-5	Thumb screw M5X21	2		
110	1413H7-2	SUB BASE COMPLETE	1		
111	8155X6-1	HS014G NAME PLATE	1		
112	8155X7-9	HS014G SERIAL NO. LABEL	1		
A01	194202-9	Dust nozzle set	1		
C10	911128-8	Pan head screw M4X16 WR	1		
A02	E-28880	TCT SAW EFFI 125X25T	1		
A03	783217-7	Hex. wrench 5	1		
F07	1913K5-7	Push clamp set	1		
F12	1918P3-6	GUIDE RULE SET	1		
F13	194202-9	Dust nozzle set	1		
F14	194367-7	Guide rail 3000 set	1		
F15	194368-5	Guide rail 1400 set	1		
F16	194385-5	Clamp set	1		
F17	194416-0	Sheet 10000 set	1		
F18	194417-8	Rubber sheet 10000 set	1		
F19	194418-6	Position sheet 1400 set	1		
F20	194419-4	Position sheet 3000 set	1		

F21	194910-2	Position sheet 1900 set		1		
F23	194925-9	Guide rail 1900 set		1		
F25	198885-7	Guide rail connector set		1		
F26	199140-0	Guide rail 1000 set		1		
F27	199141-8	Guide rail 1500 set		1		
F28	199826-6	Ratchet clamp set		1		

Please state Parts No. when your order.

Print Date 06/09/2026