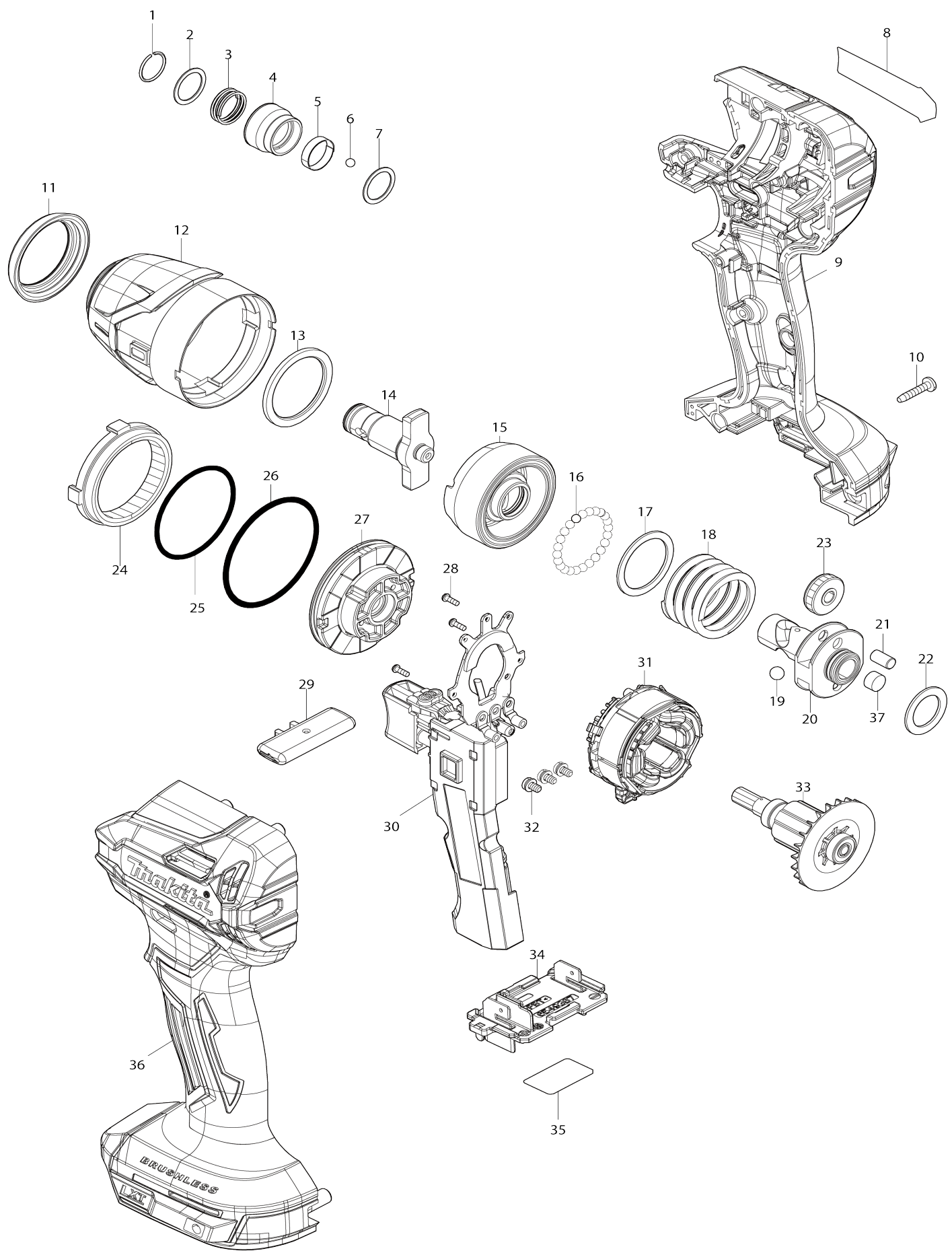


# Model No.DTD158 Cordless Impact Driver



# Model No.DTD158 Cordless Impact Driver

Item No.	Parts No.	Description	Interchangability	Q'ty	New/Old	Note1	Note2
001	231952-6	Ring spring 12		1			
002	253575-0	Flat washer 13		1			
003	232592-3	Compression spring 14		1			
004	327B23-8	Bit sleeve		1			
005	232800-2	Leaf spring		1			
006	216040-0	Steel ball 3.5		2			
007	253575-0	Flat washer 13		1			
008	8155E0-0	DTD158 NAME PLATE		1			
009	1832G6-5	HOUSING SET		1			
C10	263005-3	Rubber pin 6		2			
C20	263032-0	Rubber pin 4		6			
C30	252126-6	Hex. lock nut M4-7		2			
009		INC. 36					
010	266429-2	Binding head tapping screw 3X16		9			
011	422A03-4	Bumper		1			
012	1412U1-9	HAMMER CASE COMPLETE		1			
013	261168-9	Nylon washer 29		1			
014	327G34-3	ANVIL M		1			
015	327B60-2	Hammer		1			
016	216040-0	Steel ball 3.5		24			
017	267175-0	Flat washer 24		1			
018	234251-5	Compression spring 25		1			
019	216041-8	Steel ball 5.6		2			
020	327G36-9	SPINDLE		1			
021	256253-1	Pin 5		2			
022	253853-8	Flat washer 15		1			
023	227362-3	Spur gear 22		2			
024	227A92-2	Internal gear 51		1			
025	213507-9	O-ring 40		1			
026	213606-7	O-ring 48		1			
027	4134N6-5	BEARING BOX		1			
028	266490-9	Pan head tapping screw 2X6		3			
029	4134N7-3	F/R CHANGE LEVER		1			
030	620T59-7	CONTROL MODULE		1			
031	629224-5	Stator		1			
032	652069-6	Flat head screw M3X6		3			
033	619933-4	ROTOR		1			
034	654938-7	Terminal		1			
035	8155E1-8	DTD158 SERIAL NO. LABEL		1			
036	1832G6-5	HOUSING SET		1			
C10	263005-3	Rubber pin 6		2			
C20	263032-0	Rubber pin 4		6			
C30	252126-6	Hex. lock nut M4-7		2			
036		INC. 9					
037	422B40-4	Felt		1			
A01	266622-8	Truss head screw M4X12		1			
A02	346317-0	Hook		1			

F01	191K57-9	Tool hanger set		1			
F02	194280-9	Stopper set		1	*		
F03	194281-7	Stopper set		1	*		
F05	194649-7	Battery protector set		1			
F06	194654-4	Wide hook set		1			

Please state Parts No. when your order.

Print Date 01/20/2026